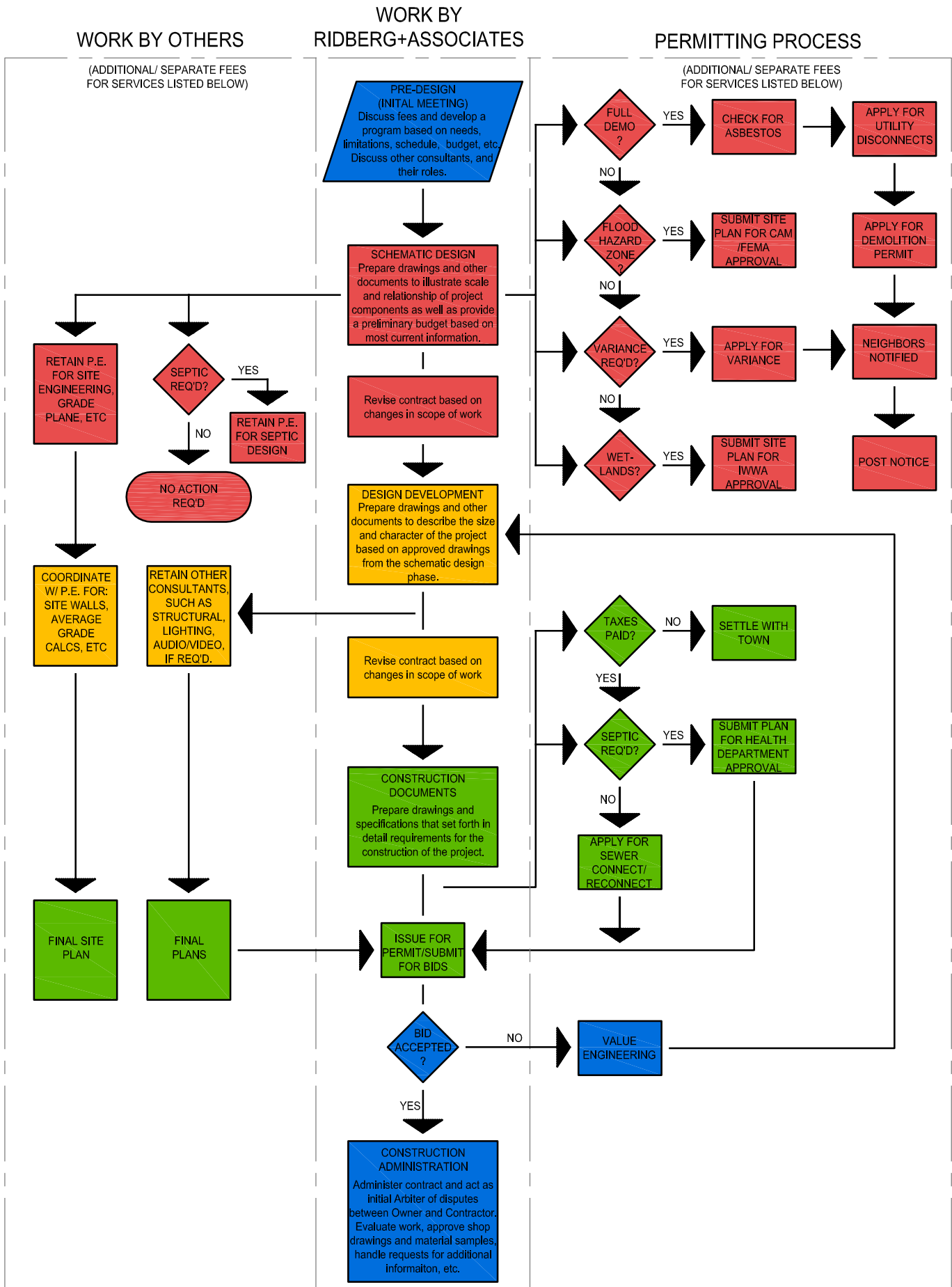


SINGLE AND TWO-FAMILY RESIDENCES-SIMPLIFIED DESIGN AND PERMITTING PROCESS GREENWICH, CONNECTICUT



* Descriptions of the phases of architectural design have been quoted or paraphrased from "The Architect's Handbook of Professional Practice" by The American Institute of Architects. This chart is copyright © 2005 Ridberg+Associates, Architects. Please see important additional information on all project phases at www.aia.org and permit processes www.greenwicht.org.